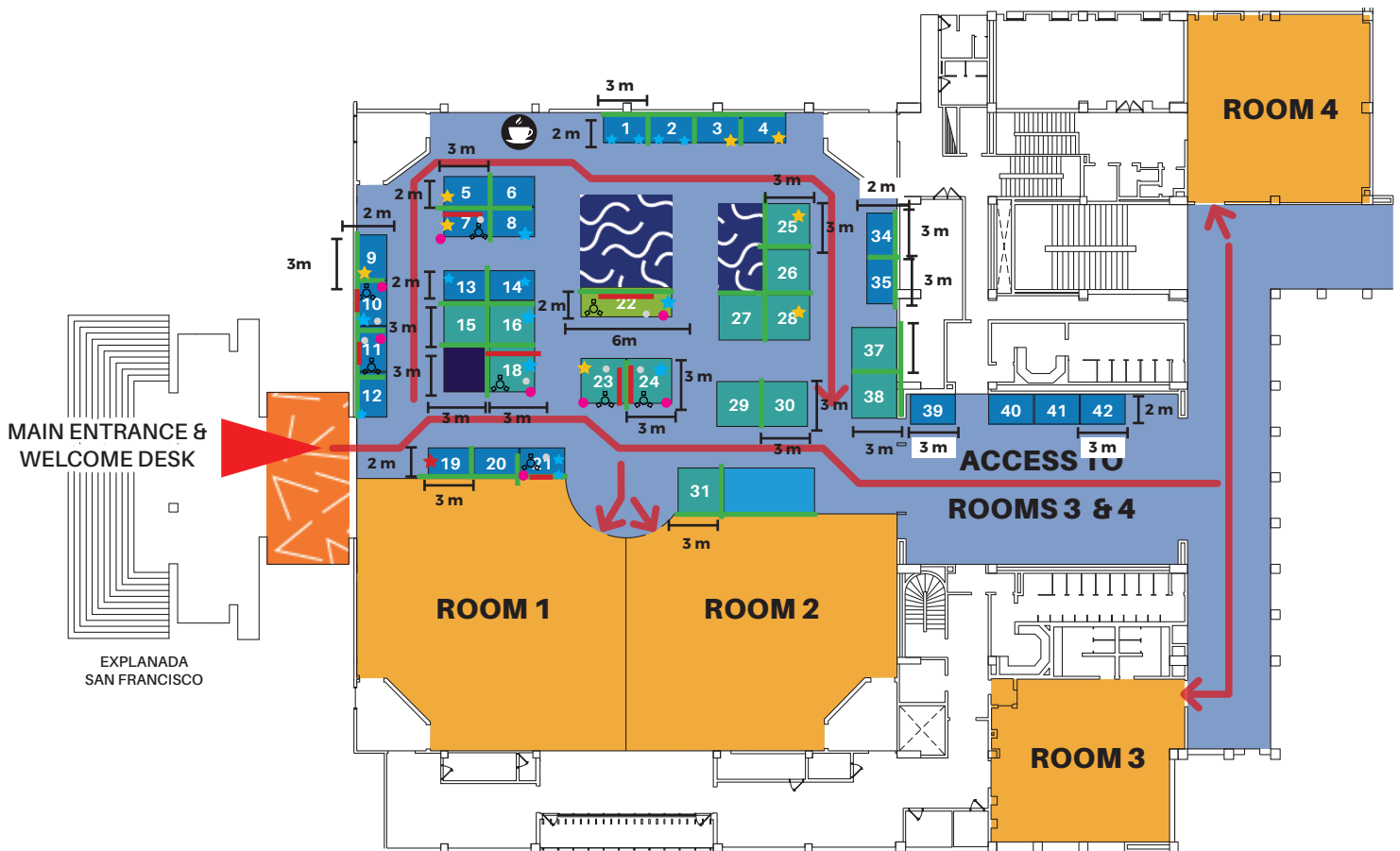




CENTRO DE CONVENCIONES
CARTAGENA DE INDIAS

Level 2



BOOTH EQUIPMENT

DIVIDING WALLS

(MANDATORY: BOTH SIDES OF WALLS ARE TO BE CONSTRUCTED AND COVERED BY THE EXHIBITOR - EXTERNAL WALL SHOULD NOT BE LEFT RAW > PLEASE COVER WITH WHITE TISSUE / 3M HEIGHT MAXIMUM FOR ALL BOOTHS)

- Paper bin
- Table classic
- Table + chairs

SPECIFICITIES

• PREMIUM CONSTRUCTION:

- CARPET: CARPET COLOR (NIGHT BLUE - PANTONE 2965C) WITH POLYTHEME FILM (REMOVAL INCLUDED)
- FURNISHINGS: ALL INCLUSIVE - AS PER YOUR SIZE BOOTH, CHECK EXACT ITEMS ON THE PRODUCT DESCRIPTION
- PARTITIONS: 2.5MH WOODEN WALL(S) COVERED WITH WHITE BRUSHED COTTON IN WHITE MAT (QUANTITY DEPENDS ON SIDES OPEN) AND 1 X XXMW X 2.20MH WOODEN SHAPE FOR BACKWALL GRAPHIC
- LIGHTING: ONE SPOT ROD (100 WATT) PER 3 SQM AND LED LIGHTS BEHIND THE WOODEN SHAPE FOR BACKWALL GRAPHIC
- ELECTRICITY: POWER CONSUMPTION IS TO BE ORDERED SEPARATELY ONLINE THROUGH THE PLATFORM
- SIGNAGE: XXMW X 2.20MH DIGITAL PRINTING ON TARPAULIN AS BACKWALL GRAPHIC, UP TO 2 X 60CM DIAMETER SIGNS FIXED ON BACKWALL (LETTER PRINT OF BOOTH SIGN AND BOOTH NUMBER)

ELECTRICITY

- ★ Power supply 6kW
- ★ Power supply 3kW
- ★ Power supply 2kW